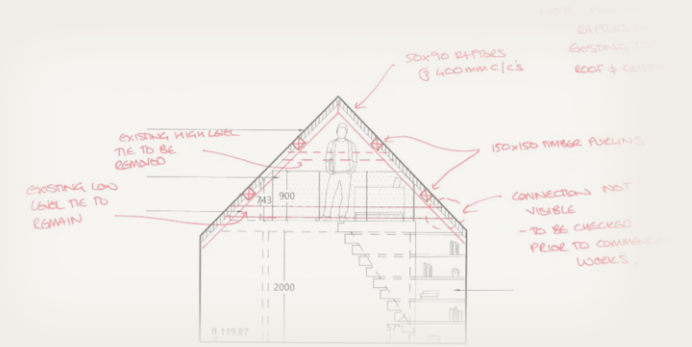
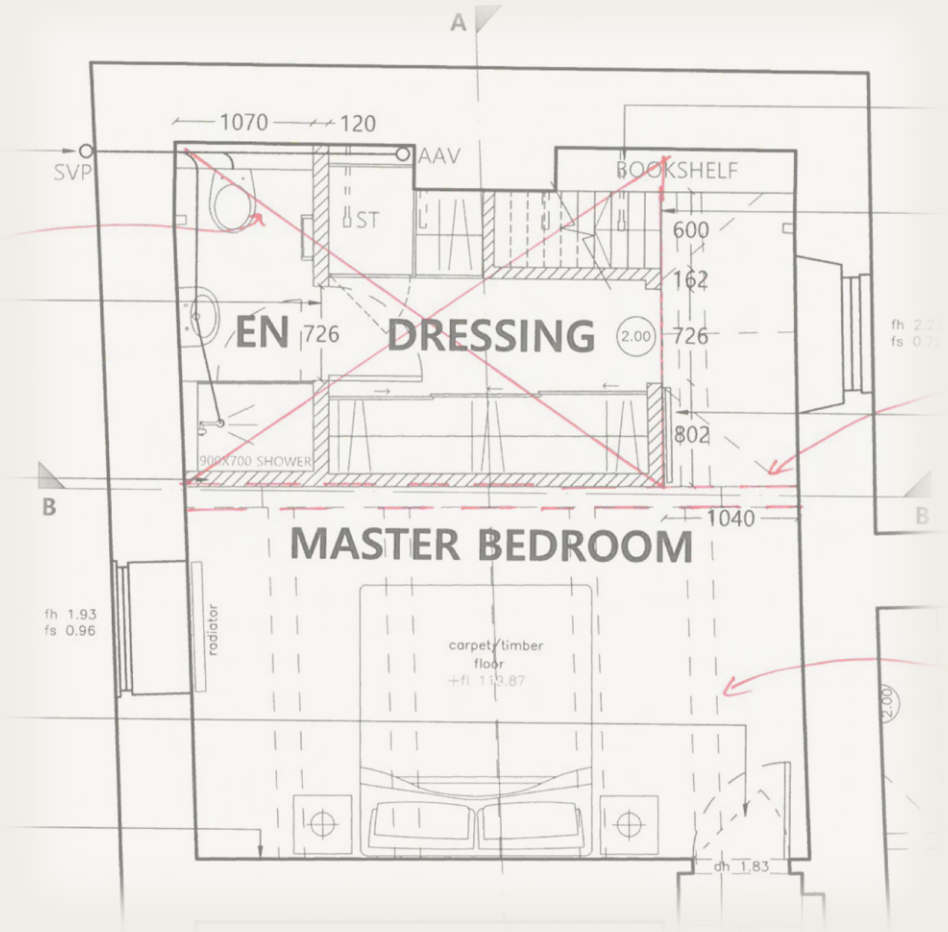


Lime and Lintel

Portfolio of works





Design brief.

To remove existing ceiling exposing original beams and Cotswold stone.
 An en-suite bathroom with dressing room to be added with a staircase leading to a Mezzanine area above.

Confirmation of works.

Once the area has been stripped back to reveal the original features, the anticipated works can be confirmed.

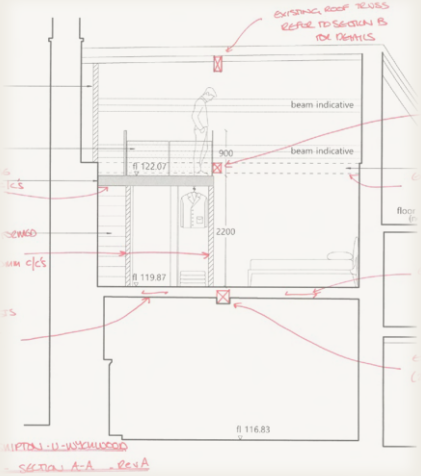


Original stonework revealed, to assess works for restoration. Repointing works needed, along with Lime plaster.

Building materials used in accordance with the listed building guidelines and alongside local council approval.



Completion stage of the project. Re-pointing works complete, and lime plaster applied to relevant areas. Fixtures and fittings added as per design.





Decoration of the room, whilst being sympathetic to the original features.



En-suite and walk-in closet. Maximising the use of the limited space available whilst maintaining the brief.

